

**CUSTOM
ENGINEERED DREDGE HOSE**



**Custom-engineered
SUCTION
DISCHARGE
SLEEVES
GIMBALS**

SR

salem-republic rubber company

475 West California Avenue

P.O. Box 339 • Sebring, Ohio 44672 • USA

1-800-686-4199 • fax: 330-938-9809

www.salem-republic.com • e-mail: drew@salem-republic.com

35 YEARS OF CUSTOM ENGINEERED EXCELLENCE



custom-engineered handmade

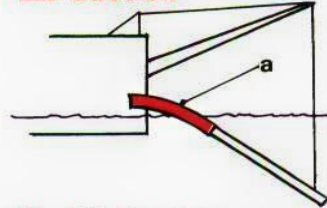
■ Salem-Republic's Dredging Hose features "customized" heavy-duty, wear-resistant constructions employing the finest grades of natural and synthetic rubber and fabric. Produced in hard-and soft-wall constructions, S-R's Dredging Hose is quality-based with over 80 years' experience in handmade hose design and manufacturing.

S-R engineers and manufactures the complete hose assembly from formulation of all rubber compounds to vulcanizing the finished hose. This is your assurance that all raw materials used in production are compatible with each other and most suitable for the intended use of the hose.

If your requirements include flexibility, stability, vibration damping or resistance to abusive handling, special ends or no ends at all . . . call Salem-Republic Rubber Company.

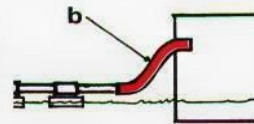
Salem-Republic... single-source dredge hose reliability!

a. Suction



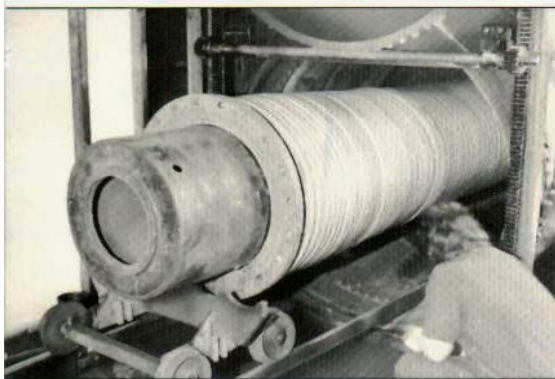
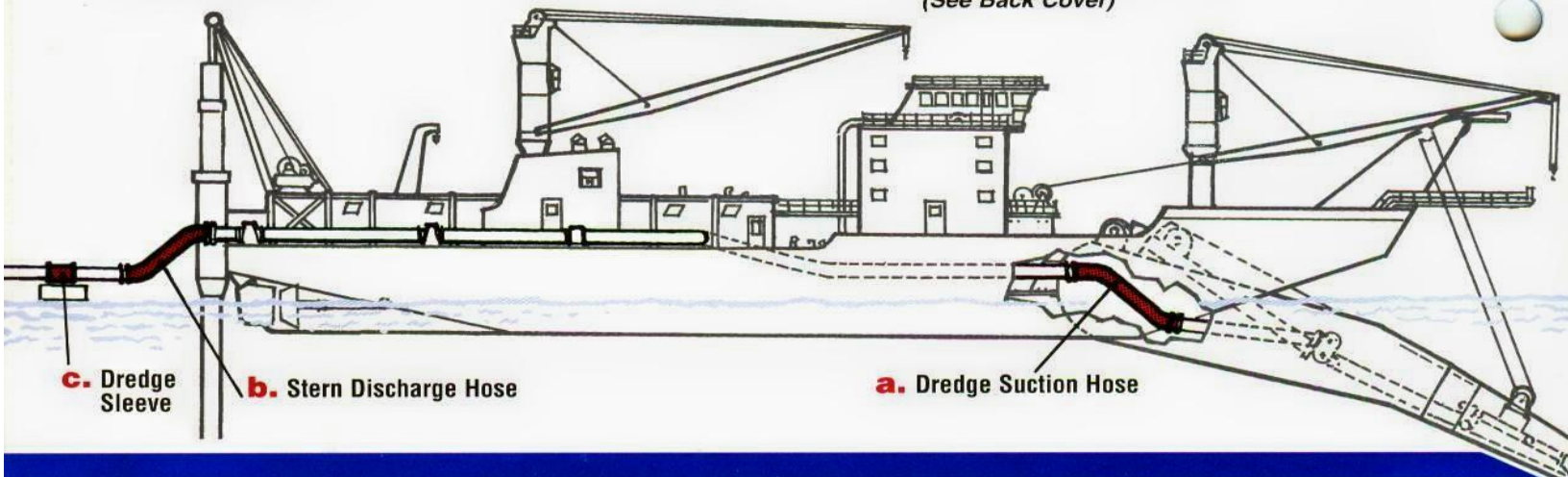
S-R's tough hard suction hose features a custom-blended rubber lining that resists the most severe cutting and abrasive action. Spring steel helix wire with multiple synthetic textile reinforcement provides for full vacuum, kink resistance, and vibration damping.

b. Discharge Hard-wall (SDH) and soft-wall (SDS) stern discharge hose are designed to meet your needs. Hard-wall where bend radius is controlled ... Soft-wall where kinking is unavoidable.

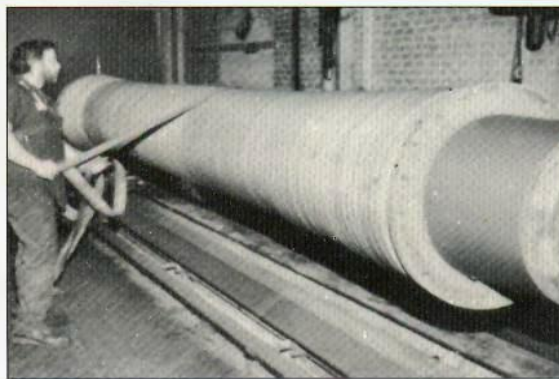


c. Sleeve Only the best ... S-R's unique construction includes use of nonwicking ... high tensile synthetic tire cord. Guarantees no-swell O.D. under pressure. No "ply ratings" ... the number of plies stated is **actual count**.

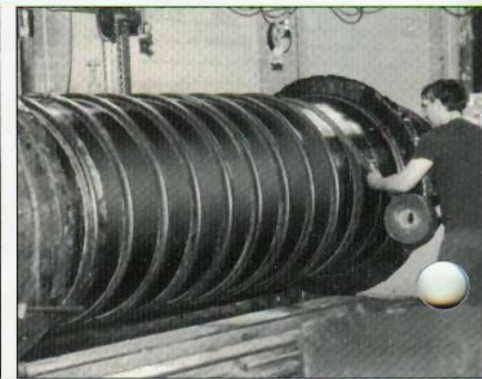
d. Gimbals Specifically designed to exacting specification for individual dragarm hopper dredges. (See Back Cover)



Loading 24-in. dredge suction hose in autoclave for vulcanizing.



Unwrapping 24-in. dredge suction hose after vulcanizing.



Forty-two-inch diameter gimbal joint hose in process.

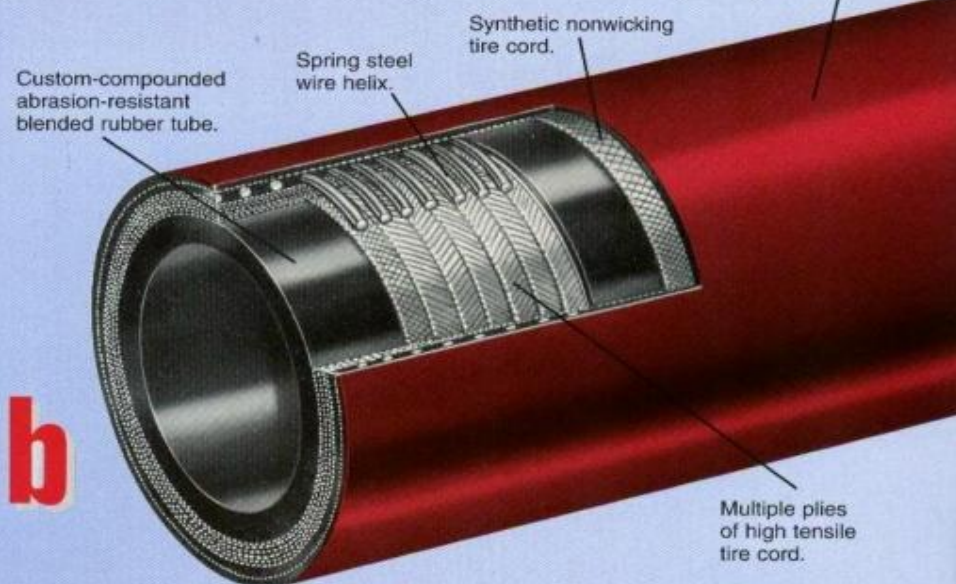
dredge hose...designed and built for survival from

Type **SDH** Hard-Wall DISCHARGE HOSE

- **Custom Cover** — supplied with wear-resistant SBR or neoprene for added resistance to ozone and sunlight.
- **Optional Tube Lining Thickness** — to meet special needs of materials being handled, hose diameter, and service conditions. S-R's own recipes are compounded to resist abrasion and cutting.
- **Custom Lengths** — to 50 ft., diameters to match pipe I.D.'s or O.D.'s up to 42".
- **Custom Ends** — straight or enlarged to fit your pipe size or any of the flanged ends pictured on Page 6.

S-R Hard-Wall Discharge Hose employs a wire helix with multi-ply reinforcing fabric. The helix construction, which also permits use for suction service, offers the dredge operator a discharge hose that stays round through normal bend radii. This affords extended service life over soft-wall hose, which is susceptible to ovaling out. Operating pressures in the range of 150 to 200 psi are standard with a 4:1 safety factor.

Available with numerous options, including special diameters, lengths, and cover materials, S-R's Hard-Wall Discharge Hose helps to reduce dredge downtime by minimizing maintenance problems.



b

(Left) Barge-unloading dredge using twin suction/discharge hoses.

(Below) Twelve-inch stern discharge hose.



abrasive wear...abusive handling



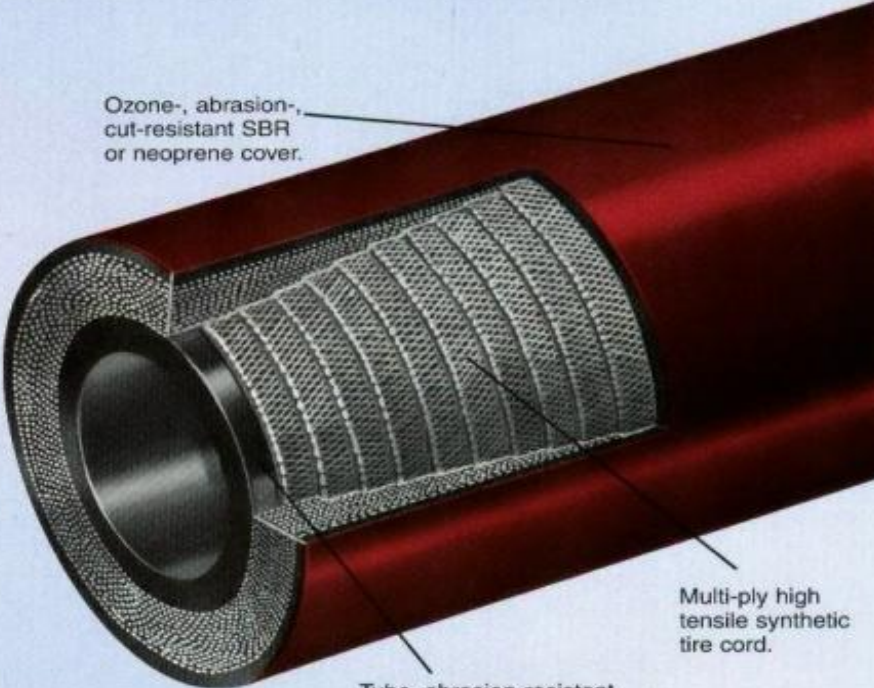
Type
SDS
DISCHARGE
HOSE

S-R's Soft-Wall Discharge Hose designed for operating pressures in the 150 to 200 psi range is handmade, using the same top quality compounds as in S-R's hard-wall hose with multiple plies of high tensile synthetic tire cord textile reinforcement.

Soft-Wall Discharge Hose is intended for service when tides, current or operating conditions may cause kinking, which quickly destroys hard-wall hose. Applying pressure to a kinked soft-wall hose will round out the hose with no detrimental effect.

- **Hose Cover** — SBR rubber or neoprene is available to meet custom requirements for cut and abrasion resistance, and to withstand strong sunlight and ozone. S-R will provide a tough neoprene cover for salt-water service, and where it will be exposed to long periods of sunlight.
- **Soft-Wall Construction** — Recommended for use where hose kinking can otherwise cause premature failure. S-R soft-wall discharge hose will oval out, but springs back under working pressure.

b



Call Today:
800/686-4199
Fax: 330/938-9809

Visit Our Website!
www.salem-republic.com

Type SDS soft-wall 12 $\frac{3}{4}$ -in. stern discharge hose.

...wire reinforced, nondeforming suction hose

Custom SUCTION SERVICE HOSE

- **S-R Carcass** — Reinforced suction hose takes positive pressure for safe, efficient back-flushing to dislodge obstructions.
- **Finest Quality Rubber Cover** — Assures high tear- and abrasion-resistance.
- **Bias** — Multi-ply synthetic fabrics assure maximum tensile strength and ability to absorb shock and vibration.
- **Custom Tube Linings** — are supplied to customer needs and are made of the highest quality custom blends of natural and synthetic rubber.

Salem-Republic Suction Hose is made with a premium grade rubber lining. It features abrasion and cut resistance with no water absorption ... to withstand the destructive action of sand and gravel from quarries and beaches, rock and sludge from channels and harbors, coral from the sea.

In addition to the wire helix found close to the thick tube, multi-plyes of polyester, nylon or cotton duck fabrics are used to reinforce the hose carcass to form an extra-heavy wall that absorbs shock and vibration between cutter head and pump. Custom-engineered to provide the bend radius you need.

S-R's Suction Hose is supplied with a custom cover of rubber or neoprene to meet your most exacting need for wear resistance and protection from sunlight and ozone.

Abrasion- and ozone-resistant SBR or neoprene cover.

Rubber-encapsulated high tensile carbon steel wire helix.

a



Multi-ply synthetic or natural fiber reinforcing.

Custom-blended cut- and abrasion-resistant rubber lining.

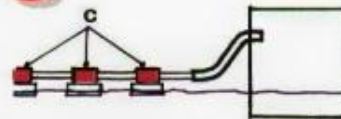


Suction/discharge hoses, 16-in. I.D., used on barge unloading dredge. Hoses feature hard-wall suction construction.

Salem-Republic dredge pipe sleeves

Multiple plies of high tensile synthetic tire cord.

C



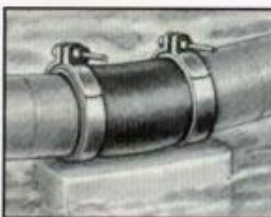
Heavy-gauge custom-blended abrasion-resistant low water-absorbent rubber blend liner.

Tough ozone-, abrasion-, cut-resistant blended rubber cover.

S-R's Dredge Sleeves are unsurpassed for quality and stability. Salem-Republic guarantees its sleeves will not expand under pressure causing clamps to loosen.

The same high-quality custom-blended compounds found in S-R's suction and discharge hoses are used in S-R's dredge sleeves.

Salem-Republic does not use a ply "rating" system. The number of plies stated for any size are by actual count.



Typical pontoon pipe connection.

Gimbal joint hose



d

Shown at left, 28-in. gimbal aboard the SS Wheeler Dredge.

S-R Gimbal Joint Suction Hose is used with universal joints or gimbals which constrain hose movement in two planes. This provides controlled bending with problems of overstressing eliminated.

Available in up to 42-in. I.D., the Gimbal-type suction hose features imbedded welded steel rings for maximum compressive strength and flexibility.

The smooth bore design features use of highest quality rubber lining, resistant to abrasion and cuts. The heavy-duty neoprene cover is impervious to sunlight, salt water, and oil.



optional end constructions

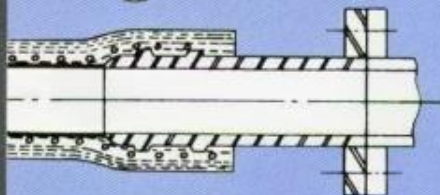
Hose ends shown below meet the widest variety of service and budget needs.* Where possible, hose terminations should use nipples that are the same I.D. as the hose to minimize turbulence and accelerated wear.



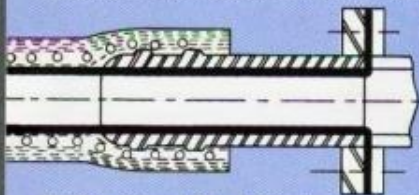
Full-Face Duck & Rubber Flange — for maximum free length flexibility. Supplied with split steel backup bolt flange. Eliminates metal in fluidway at joint.



Vulcanized Rubber/Fabric/Steel Angle Ring Beaded Ends — provide floating flange connection. Bead diameter terminates before mating flange bolt circle.



Built-In Steel Nipple — provides most secure fitting possible. Nipple I.D. matches hose I.D., allowing full flow to minimize turbulence and pressure drop.



Rubber-Lined Steel Nipple — provides extended service by protecting the steel nipple from wear and corrosion.

Note: Not Shown — Enlarged Ends available ... allow full flow. Can be supplied to match I.D./O.D. of most pipe sizes.

SIR

salem-republic rubber company

475 West California Avenue

P.O. Box 339 • Sebring, Ohio 44672 • USA

1-800-686-4199 • fax: 330-938-9809

www.salem-republic.com • e-mail: drew@salem-republic.com

over **35 YEARS** Custom Engineered Excellence